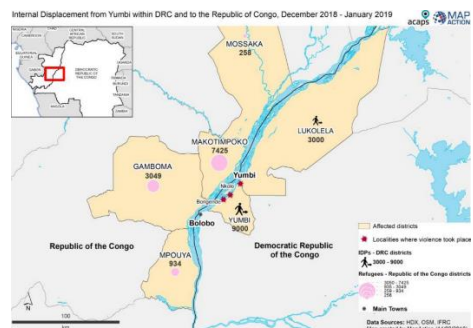




ETHIOPIA - Conflict

Remote Distributions

In 2018, inter-communal violence flared across Ethiopia, with conflict mainly linked to longstanding political and tribal divisions. This has led to internal displacement of 2.35 million people last year alone. We have been working with our partner IOM (International Organisation for Migration) to provide vital aid to families affected by the ongoing violence in southern Ethiopia. We are managing the response remotely due to the security situation. Distributions for Phase 1B, sheltering 1,500 households in West Guji have now been completed - tarpaulins, rope, blankets, water carriers, sleeping mats and kitchen sets. We also received all the beneficiary data from the post-distribution monitoring from IOM. A team of two deployed at the end of February to assess the potential for a further project.



CONGO-BRAZZAVILLE - Conflict

Assessments

In late December 2018, more than 16,000 people fled to the Republic of Congo (also known as Congo-Brazzaville) after deadly violence between communities in the Democratic Republic of Congo (DRC). According to a UNHCR report at the beginning of January, asylum-seekers 'are hosted in remote areas where communities already struggle to access water, food and healthcare. Humanitarian organisations also face logistical challenges, with some localities only accessible by the river'. On Monday 25, February, we sent a team to Congo-Brazzaville to assess the humanitarian situation on the ground. They will look at whether we can provide emergency shelter aid that meet families' needs, and what logistics would be involved to get the aid into the country.

PHILIPPINES – Tropical Storm Usman

Distributions



At the end of December 2018 Tropical Depression Usman made landfall over the island of Samar in the Philippines. The storm coincided with the monsoon season, leading to heavy rains that triggered landslides and flooding across the Bicol region, eastern Visayas, and Dinagat. We received early reports from local Rotarians in the area that many villages had been completely submerged. Local authorities reported that more than one million people across 15 provinces had been affected by the storm. At least 156 people died, 26 were missing and 105 were injured. We sent a ShelterBox Response Team shortly after the storm to work closely with Rotary and carry out assessments. We supported the self-recovery of targeted communities in the northern Samar region with an appropriate emergency shelter solution. By the end of February, the response had come to a close. In just over one month we completed distributions of ShelterKits and accompanying aid items to 2,193 households. The distribution was supported by Catarman and Calbayog Rotary Clubs. We also conducted post-distribution monitoring, including surveys and focus group discussions. Some of the early finding revealed that the solar lights were considered useful, and the mosquito nets were popular because of their larger size.



CAMEROON - *Lake Chad Basin Crisis*

Remote distributions

According to the Norwegian Refugee Council, since 2014, Boko Haram attacks have caused 241,000 Cameroonians to be internally displaced. Many of them have relocated to Minawao camp, which now accommodates more than 70,000 people. We have been working in Cameroon since 2015 with our implementing partner IEDA Relief to support households inside the camp. We are now on project 6 with IEDA which will provide tents and accompanying aid items including solar lights and water filters to 600 households in Minawao camp. Throughout February, 75 tents were distributed with the accompanying aid items to follow early March. To date, we have distributed to over 7,000 households in Cameroon.



SYRIA – *Conflict*

Remote distributions

ShelterBox has been responding to the crisis in Syria since 2012, providing essential aid items to families displaced by the war. We work with three implementing partners in Syria; Hand in Hand for Aid and Development (HIHFAD), ReliefAid, and Bahar Organisation. Syria is currently facing sub-zero temperatures. Families that have fled conflict and violence still face life-threatening danger from the severe weather conditions. In February alone, HIHFAD distributed 79 Flex 3 tents to families. These tents replaced old or damaged tents that were no longer fit for purpose. Bahar Organisation distributed 300 tents to displaced families and is now looking for critical gaps to distribute remaining aid kits for project 3. To date, we have supported almost 50,000 households displaced by the war in Syria.



SYRIA UPDATE: In the north east of Syria the Kurdish forces, with the support of the international coalition, have liberated the final territorial strong hold of the so-called Islamic State (IS). This has led to the displacement of over 30,000 people, overwhelming many of the camps supporting those internally displaced throughout the conflict. One such camp reported tripling in size over the last two months as thousands of families continue their journey to the camps to access humanitarian aid and services. It's been reported that 99% of new arrivals are women and children. While this does represent a mile stone in the Syrian conflict and the fight against so-called IS, it does not mean the end of the conflict or any improvement in the humanitarian support that is currently needed. The families that have been liberated are far from actual safety and are at the very beginning of their journey to recovery, it will likely take years and need a continued international effort to provide them with lifesaving aid and the long-term services needed to recover.